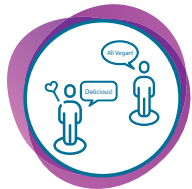


# Attendee Safe Sampling Guidelines

Please Stop and Sample



**Step 1** Stop at booth, remove mask to sample product.  
Maintain 6' of distance from others when sampling



**Step 2** Mask back up when chatting with exhibitor  
to learn more about product you are sampling



**Step 3** Dispose of sample cup at waste station  
(Make sure to check if its compostable or recyclable!)



**Step 4** Mask back up when moving throughout  
the show floor/not sampling

Enjoy the Show!

